



# DEEP COUTURE

autumn/winter 2026.27  
autunno/inverno 2026.27  
research: Elisabetta Arcaroli

From the silent depths of the ocean,  
where there is no light or gravity,  
where everything moves with ancestral grace,  
a new vision of elegance emerges,  
intense, arcane, hypnotic.  
We gradually descend into a submerged world,  
where beauty asks not to be seen, but sensed.  
It is here that the unknown becomes inspiration.  
Fascinating creatures of the abyss, never fully revealed,  
speak a language of fluid movements and soft gestures,  
of concealed strength and fragile wonder.  
Sea anemones, jellyfish, multicellular algae,  
but also creepy predatory fish  
populate a dark and bewitching parallel universe.  
Invertebrates, plankton and tentacled organisms  
fluctuate slowly in the darkness,  
attracting and unsettling at the same time.  
Every detail of this vision  
is a reminder of the essence of the deep:  
changeable, enigmatic, infinitely seductive.  
It is an invitation to inhabit that boundary between dream and  
reality, between the surface and the abyss,  
where mystery becomes harmony and  
elegance has the flavour of the undecipherable.

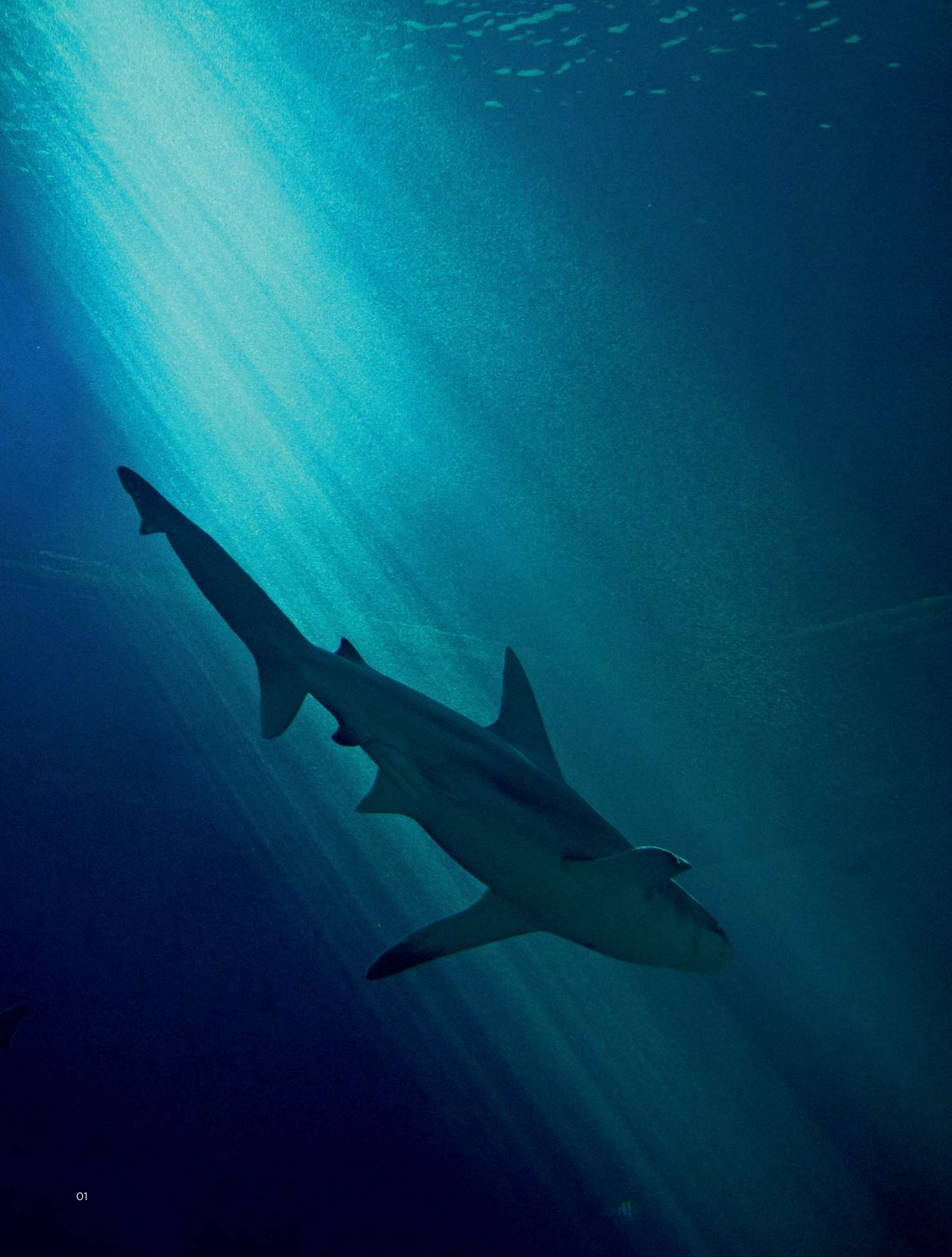
An aesthetic that eludes definition,  
moving unpredictably like a  
dark, overwhelming, unstoppable current.  
A couture that does not expose itself but reveals itself little by  
little, that does not seek to please but to enchant.  
Stately volumes, liquid draping,  
slippery and slimy textures, rubbery surfaces, glossy embossing.  
Velvety satins and swaying voiles alternate with  
thick leathers and eco-leathers with reflective textures.  
Fleshy touches combine with  
rough, uneven surfaces like scales.  
Subtle neon, iridescent and luminescent effects  
generate delicate glare while  
fine, impalpable filaments add  
a touch of anti-gravitational lightness.

The palette is inspired by the inscrutable ocean depths,  
dominated by deep blacks and bluish tones,  
broken, at times, by luminous light blues,  
octopus pinks and flashes of toxic lights.

Dalle profondità silenziose dell'oceano,  
in assenza di luce e gravità,  
dove tutto si muove con grazia ancestrale,  
emerge una nuova visione di eleganza,  
intensa, arcana, ipnotica.  
Discendiamo gradualmente in un mondo sommerso,  
in cui la bellezza non chiede di essere vista, ma intuita.  
È qui che l'ignoto diventa ispirazione.  
Fascinose creature abissali, mai completamente svelate,  
parlano una lingua fatta di movimenti fluidi e gesti molli,  
di forza celata e fragile meraviglia.  
Attinie, meduse, alghe pluricellulari,  
ma anche inquietanti pesci predatori  
popolano un universo parallelo, tenebroso e ammaliante.  
Organismi invertebrati, planctonici e tentacolari  
fluttuano lentamente nell'oscurità,  
suscitando attrazione e disagio allo stesso tempo.  
Ogni dettaglio di questa visione  
è un richiamo all'essenza del profondo:  
mutevole, enigmatica, infinitamente seducente.  
È un invito ad abitare quel confine tra sogno e realtà,  
tra la superficie e l'abisso,  
dove il mistero diventa armonia e  
l'eleganza ha il sapore dell'indecifrato.

Un'estetica che sfugge alle definizioni,  
spostandosi imprevedibile come una corrente,  
buia, travolgente, inarrestabile.  
Una couture che non si espone ma si rivela poco a poco,  
che non cerca di piacere, ma di incantare.  
Volumi importanti, drappaggi liquidi,  
texture viscide e scivolose, superfici gommose, rilievi gloss.  
Rasi vellutati e voiles ondegianti si alternano a  
pelli ed eco-pelli consistenti dalle texture riflettenti.  
Tocchi carnosi si abbinano a  
superfici ruvide e irregolari come scaglie.  
Lievi effetti neon, cangianti e luminescenti  
generano abbagli delicati mentre  
filamenti sottili e impalpabili aggiungono  
un tocco di leggerezza antigravitazionale.

La palette è ispirata agli imperscrutabili abissi marini,  
dominati da neri cupi e tonalità bluastre,  
spezzate, a tratti, da celesti luminosi,  
rosa polipo e lampi di luci tossiche.





02

KEY COLOUR



18-3921 TCX  
filtered rays



19-4536 TCX  
plankton



11-4201 TCX  
architeuthis



16-1434 TCX  
octopus



19-3831 TCX  
sea depths



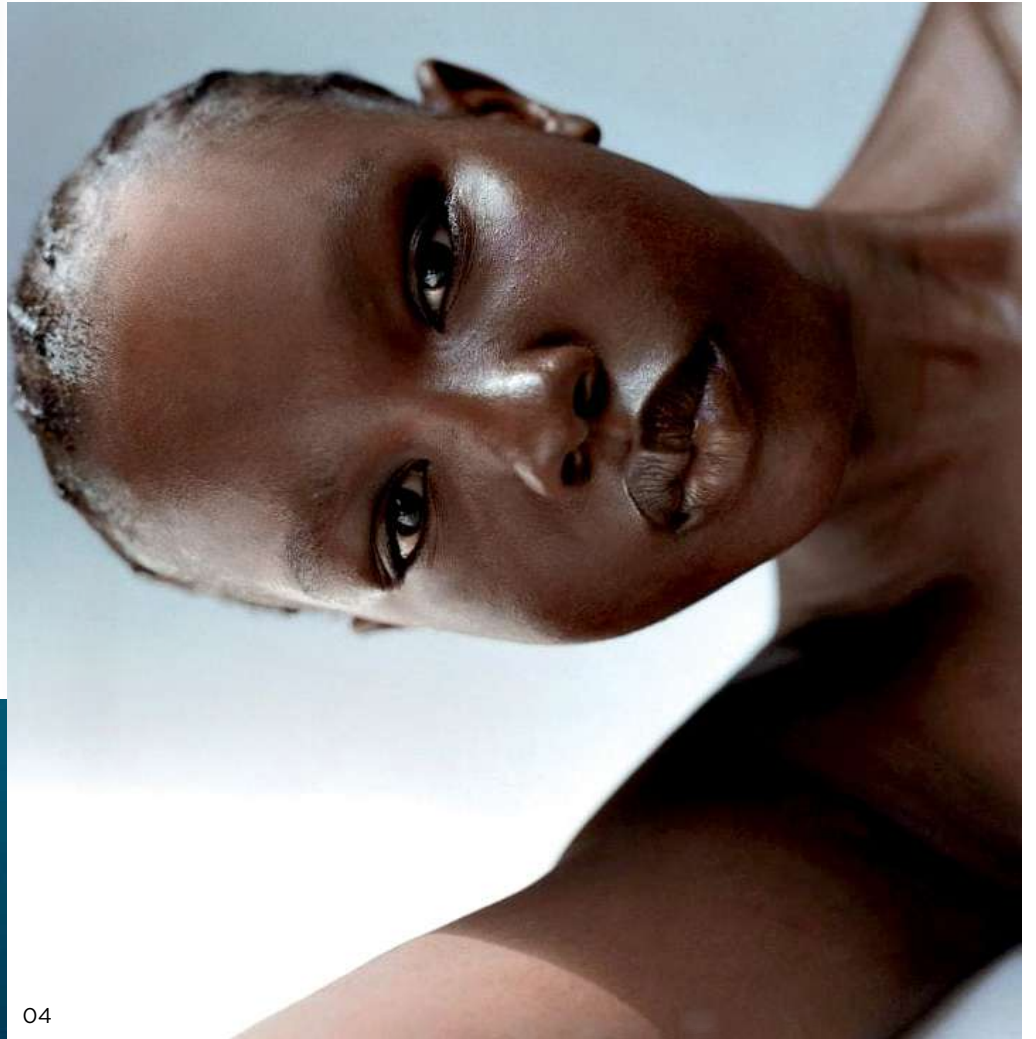
19-4000 TCX  
abyss



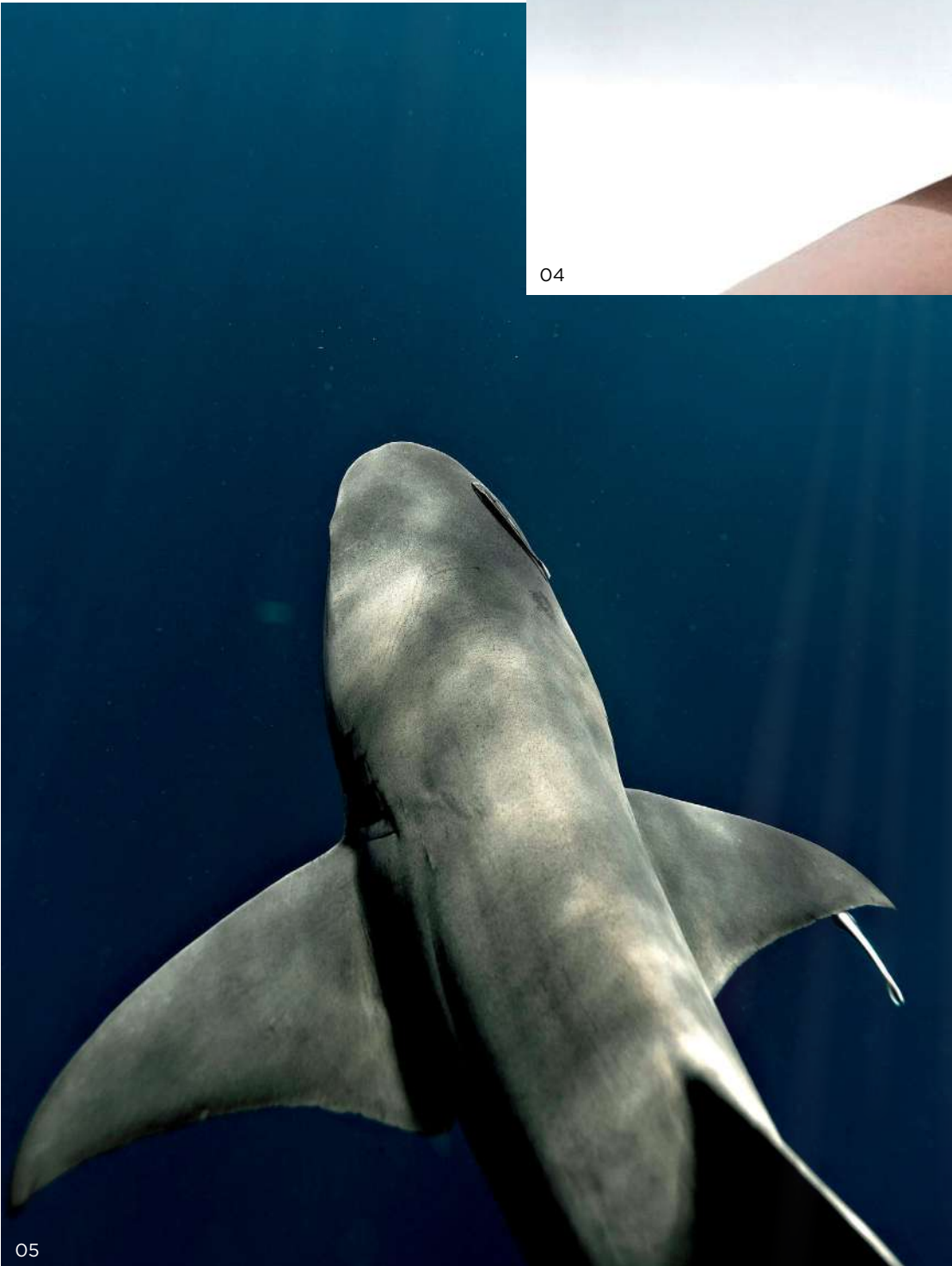
03

emerging from the depths  
sea creatures  
ancestral beauty

emersione dal profondo  
creature marine  
bellezza ancestrale



04

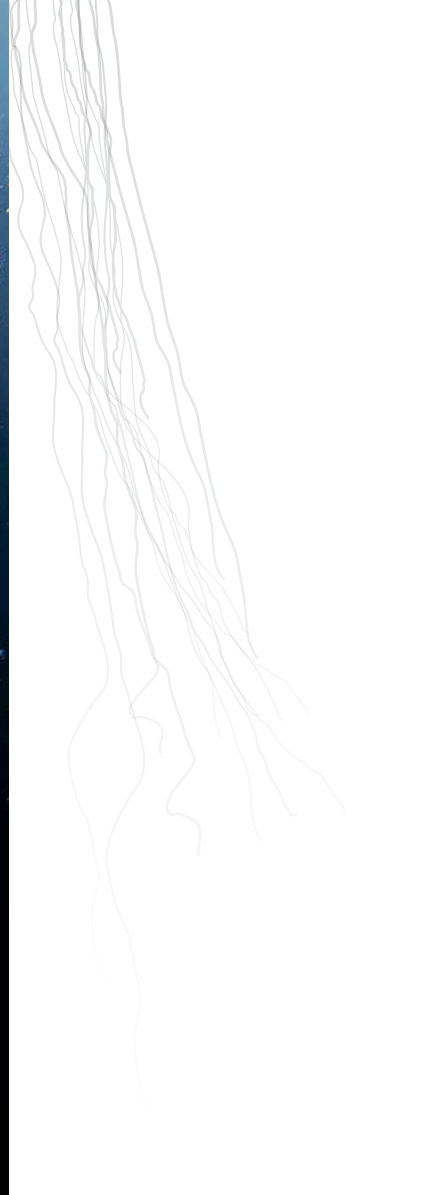


05



19-4000 TCX

18-3921 TCX



07

06

08

obscure enchantment  
organisms of the abyss  
no gravity

incanto oscuro  
organismi degli abissi  
no gravity



19-3831 TCX

16-1434 TCX



1. Lanificio dell'Olivo - 2. Petralux - 3. Brunello - 4. Tintunita - 5. Gruppo Uniese - 6. Gunold  
7. Prina Tessuti - 8. Camac - 9. Lanificio TG di Fabio



1. Ducotex - 2. Jersey Lomellina - 3. Meliastage - 4. Myzip - 5. Gritti Group - 6. Tintunita - 7. Texcart - 8. Maglificio Maggia



11



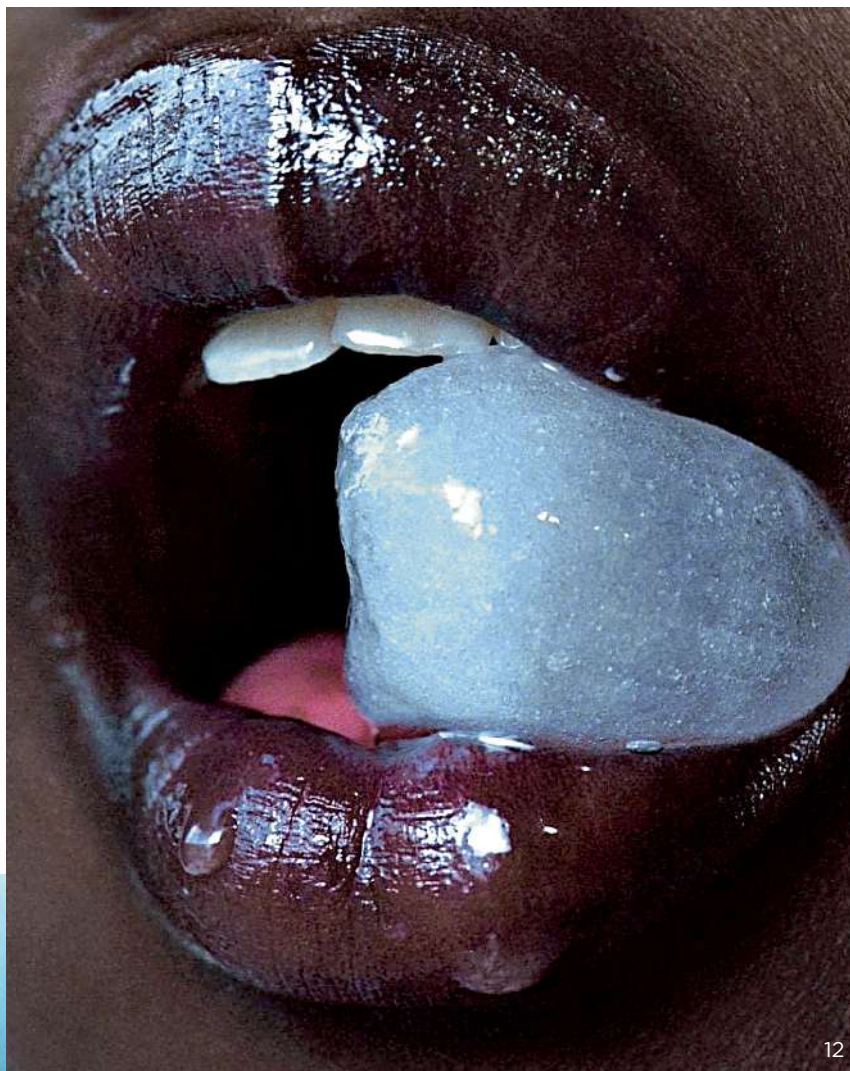
09



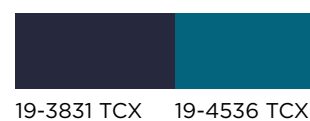
10

darkness and silence  
slimy and reflective surfaces  
rubbery consistencies

buio e silenzio  
superfici viscide e riflettenti  
consistenze gombose



12



19-3831 TCX 19-4536 TCX



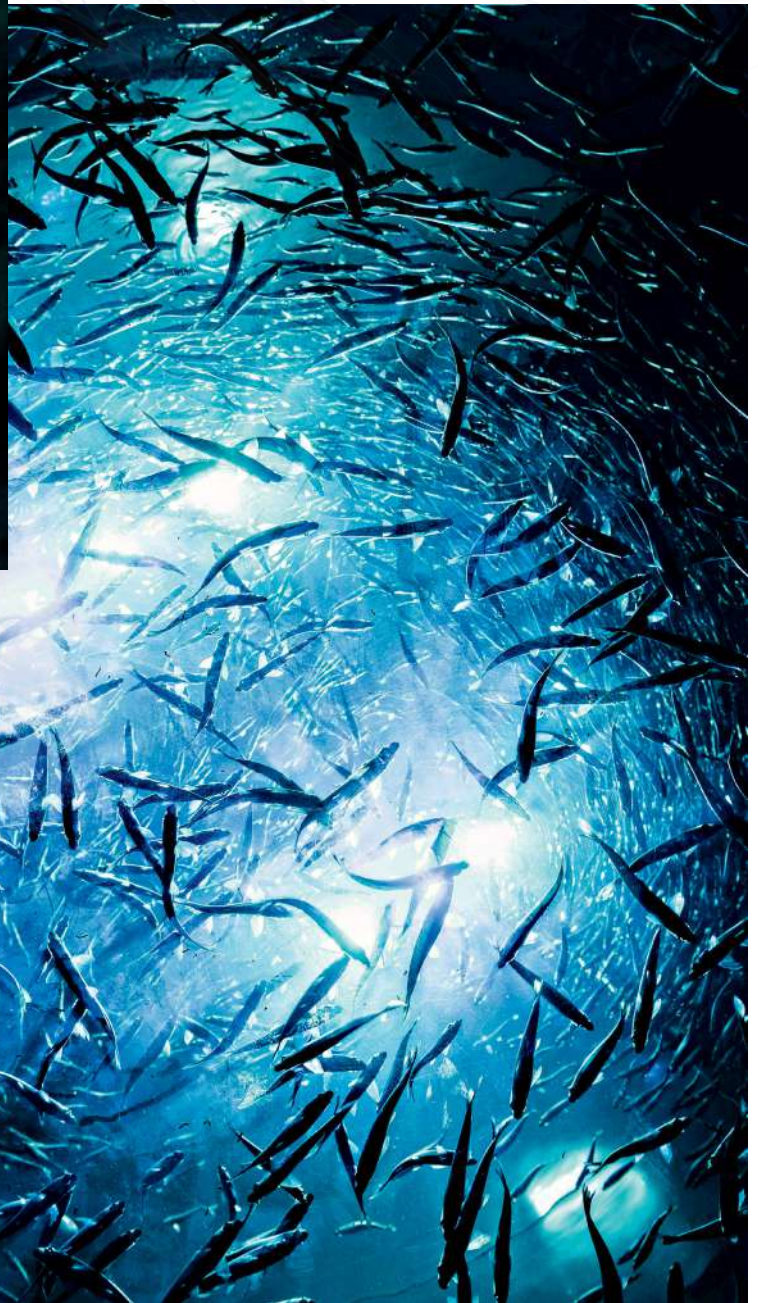
Alaïa  
a/w 2021.22



14



15



16

bioluminescent presences  
bluish effects  
glossy and sensual

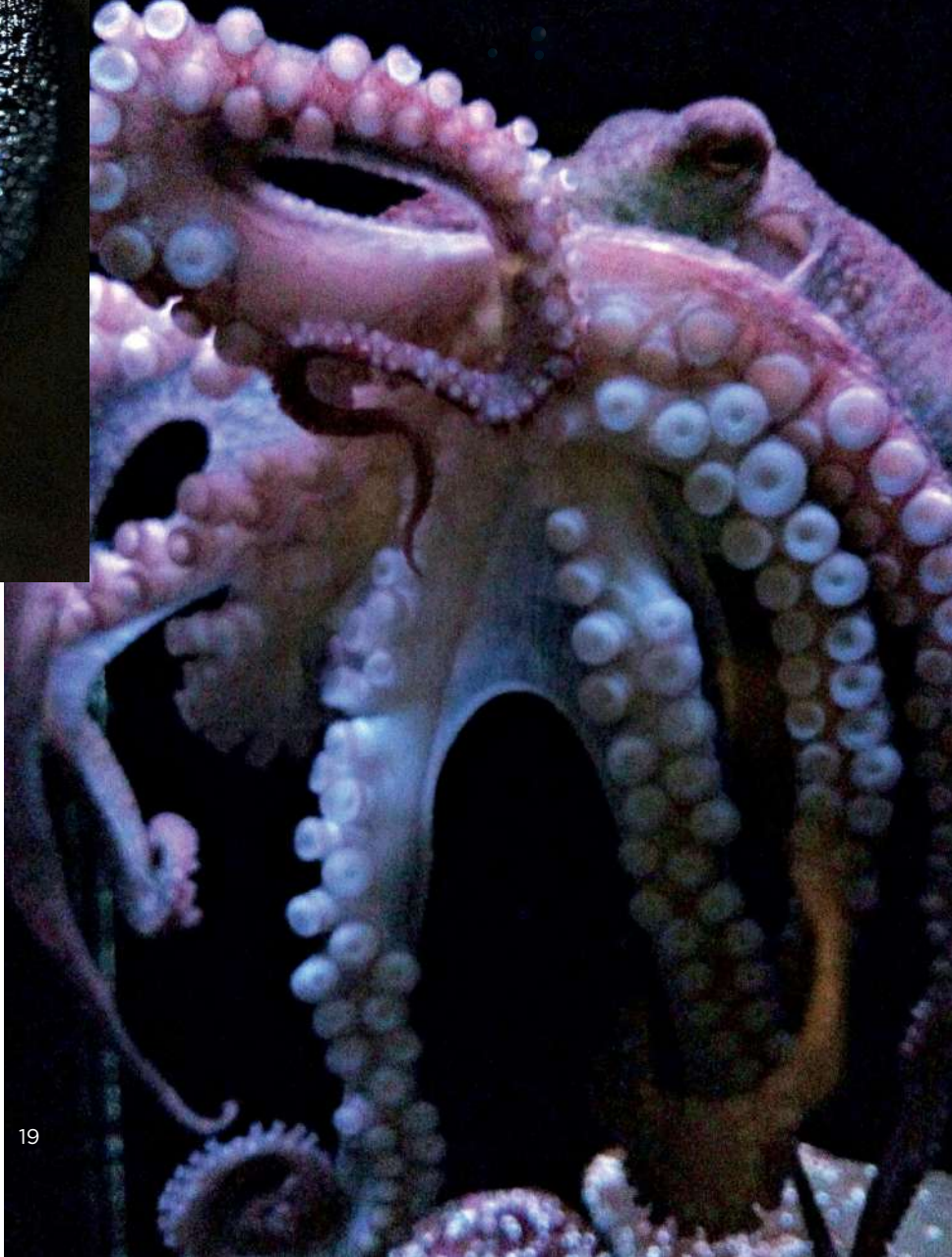
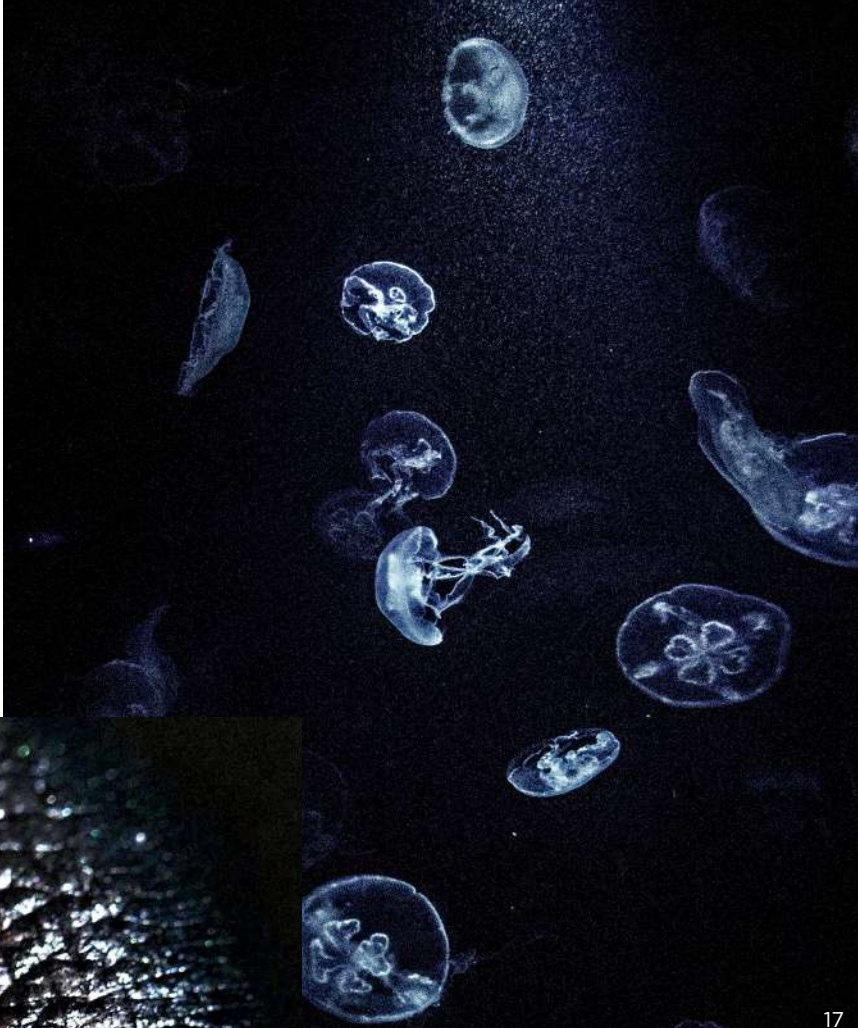
presenze bioluminescenti  
effetti bluastri  
gloss e sensuale



1. Cadicagroup - 2. Tintunita - 3. Gritti Group - 4. Besani - 5. Meliastage - 6. Brunello



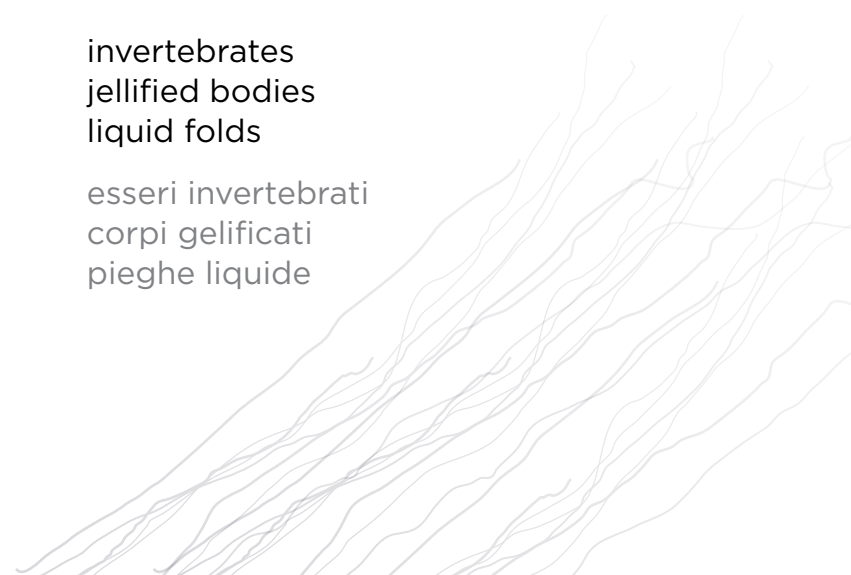
1. Pontetorto - 2. Gritti Group - 3. Cadicagroup - 4. Gruppo Uniese - 5. Lampo by Lanfranchi - 6. Igea  
7. NRGY - 8. Tintunita - 9. Meliastage





invertebrates  
jellified bodies  
liquid folds

esseri invertebrati  
corpi gelificati  
pieghe liquide



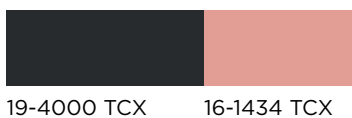
20



21



Jil Sander  
a/w 2024.25 pre-collection



19-4000 TCX

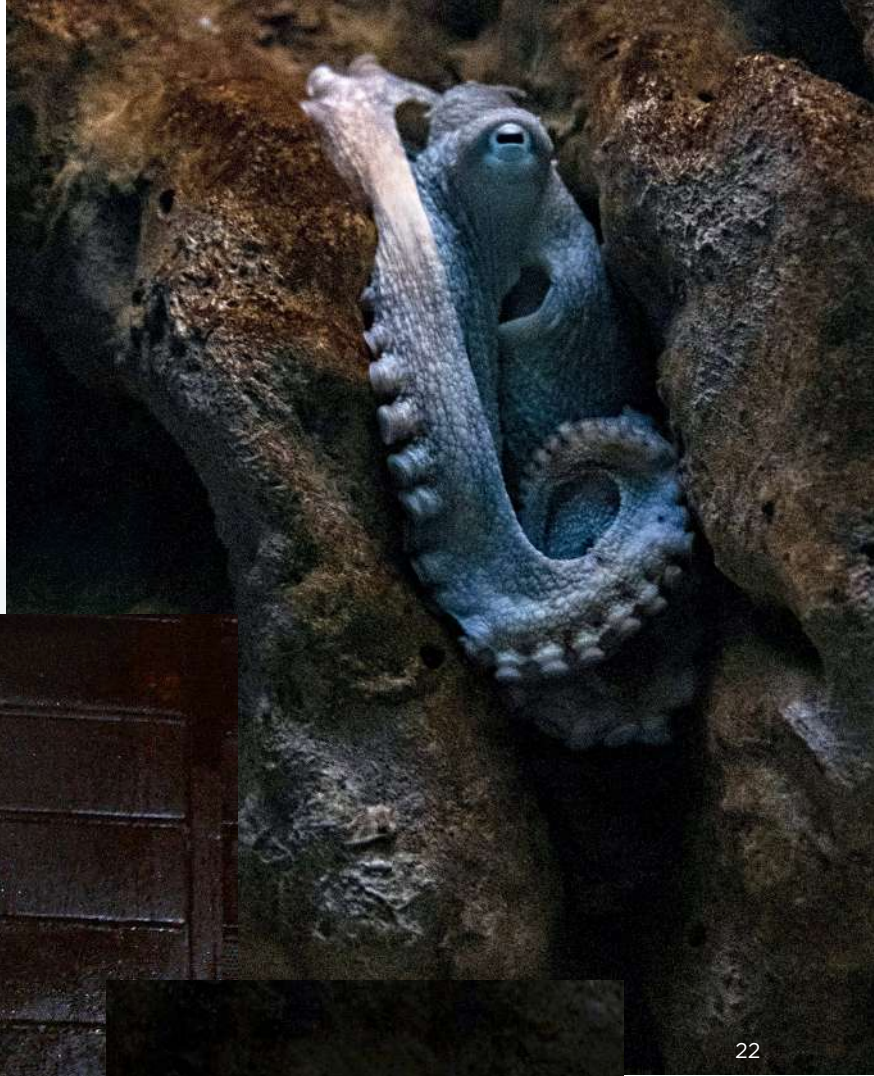
16-1434 TCX



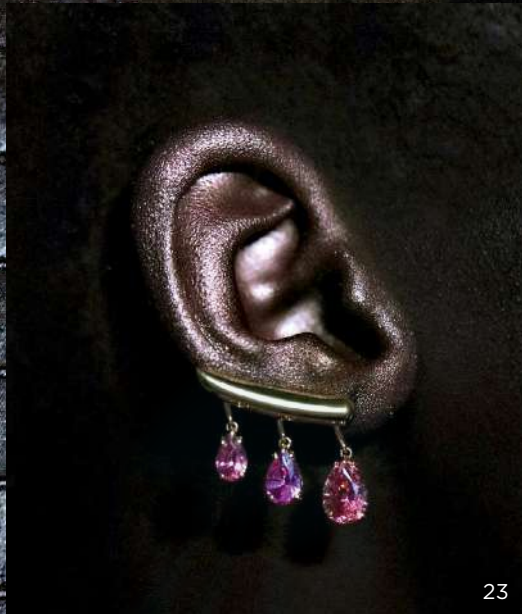
1. Tintunita - 2. Lartigianabottoni - 3. Staff Jersey - 4. Meliastage - 5. Nastrificio Angelo Valera - 6. Pinori Filati



1. Meliastage - 2. Tintunita - 3. Petralux - 4. Tessitura Rossi - 5. J-Val - 6. Ramponi - 7. Gritti Group



22



23



Jil Sande  
a/w 2021.22

coral weaves  
marine reference  
grace and lightness

trame di corallo  
suggestione marina  
grazia e leggerezza





1. Dragoni - 2. Nastrificio De Bernardi - 3. Pontetorto - 4. Brunello - 5. Lartigianabottoni  
6. Tintunita - 7. Gritti Group - 8. Luxury Jersey



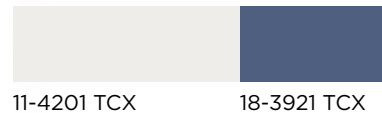
1. Brunello - 2. Camac - 3. Tintunita - 4. Lartigianabottoni

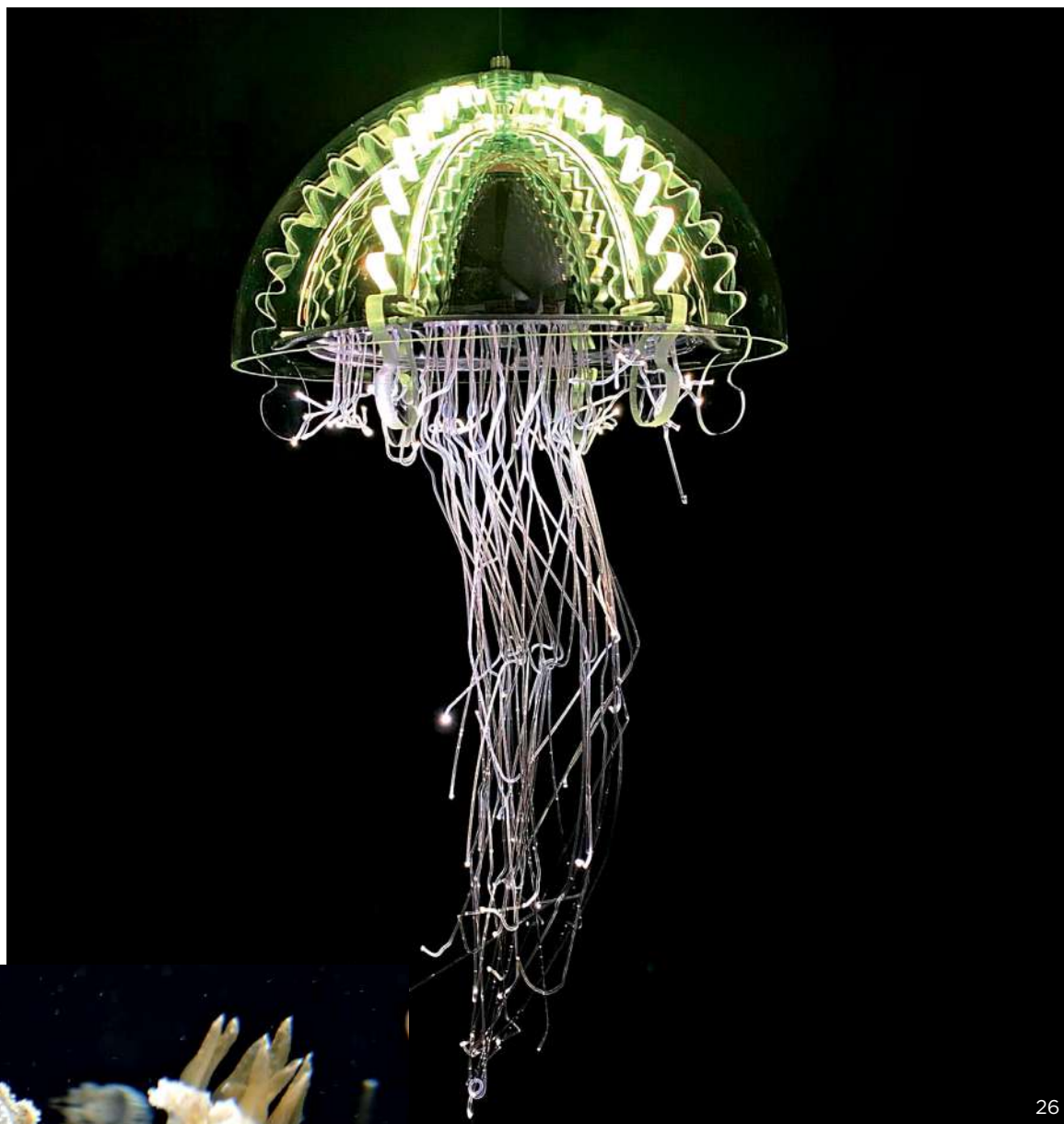


25

Images Immagini: 25. Abishek, unsplash.com.

Jil Sander  
a/w 2025.26





26



27

fluctuating beings  
tentacles and filaments  
bright and toxic

esseri fluttuanti  
tentacoli e filamenti  
luminoso e tossico





28

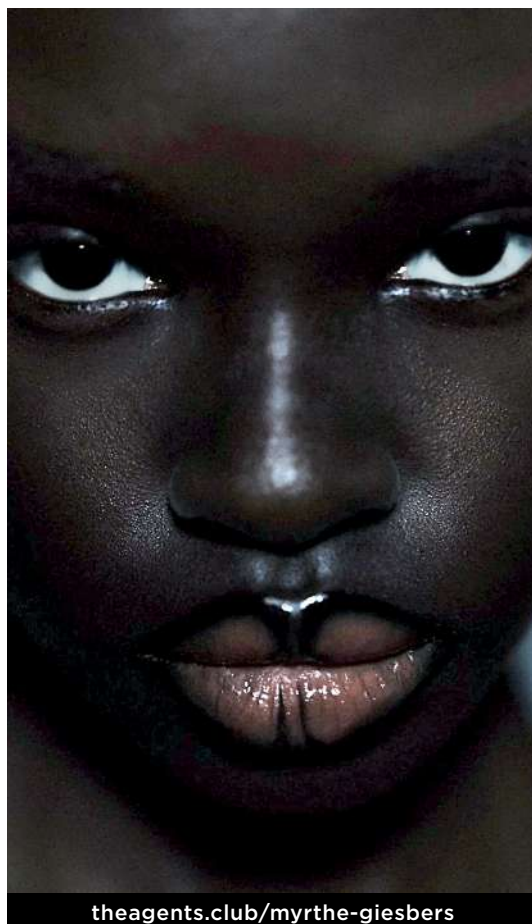
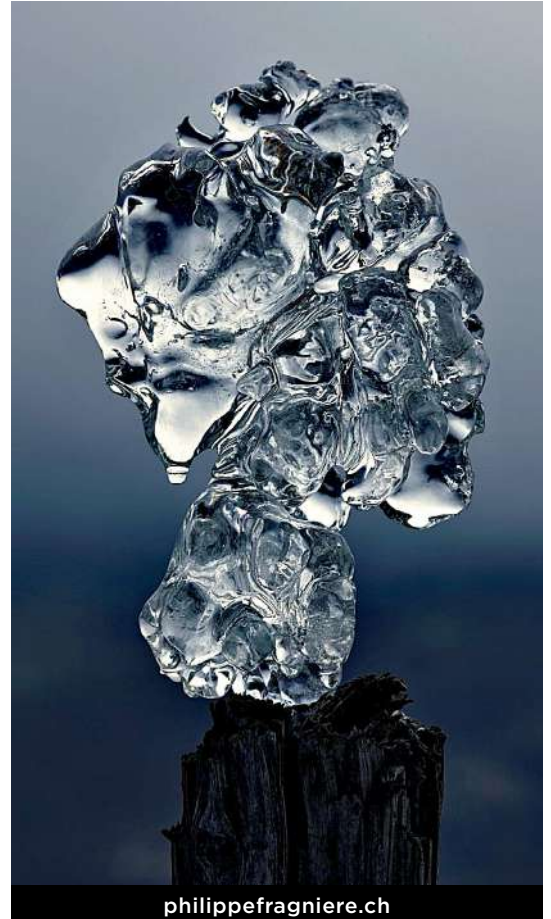


19-4536 TCX 11-4201 TCX



Jil Sander  
a/w 2025.26

# DEEP COUTURE sourcing





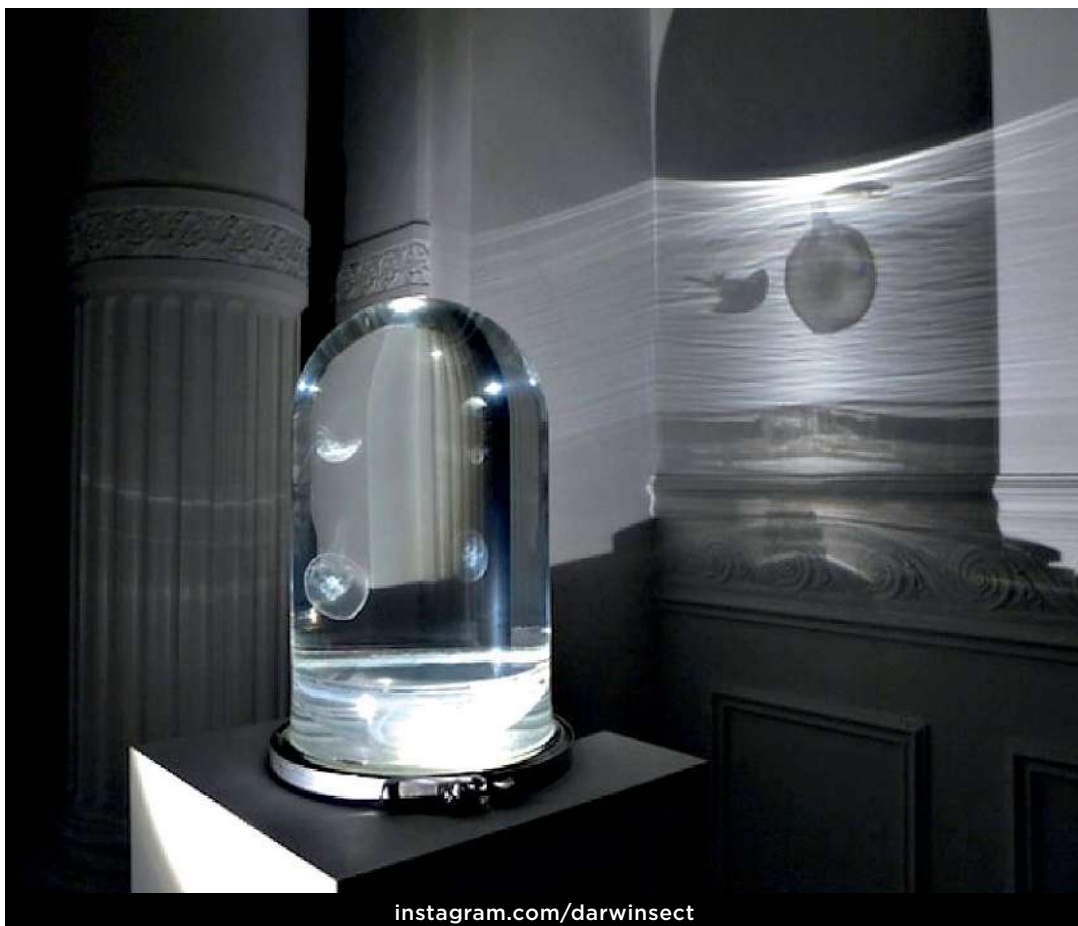
[unsplash.com/@tijsvl](https://unsplash.com/@tijsvl)



[zellweger-warmwear.com](https://zellweger-warmwear.com)



[saatchiart.com/brianoldham](https://saatchiart.com/brianoldham)

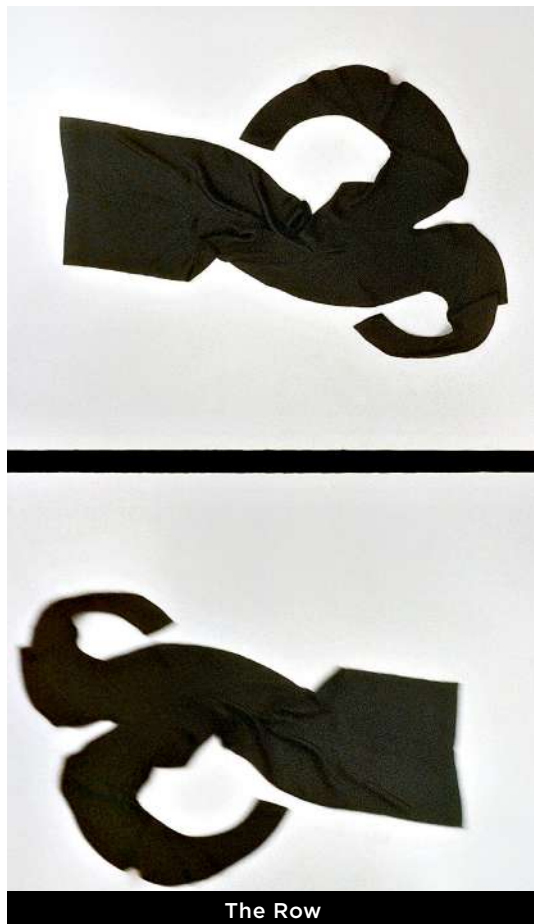


[instagram.com/darwinsect](https://instagram.com/darwinsect)



[ignant.com/2013/10/09/underwater-sculptures](https://ignant.com/2013/10/09/underwater-sculptures)

# DEEP COUTURE key looks





Jil Sander



Alaïa



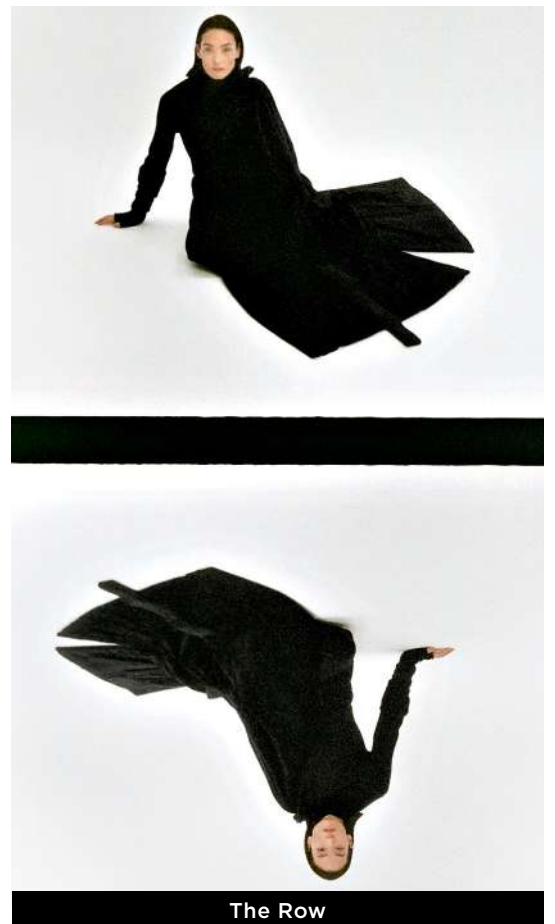
Ferragamo



Jil Sander



Eudon Choi



The Row